

Kestrel TSCM[®]
Professional Software
Signal Intelligence Support
System (SISS)[™]

Introducing the Kestrel TSCM[®]
Professional Software, Mobile Monitoring
and Analysis Platform (MMAP)[™].

The complexity of the modern threat
environment demands sophisticated
collection tools that allow for scalability,
versatility and mobility during deployment.

Our Technical Research and Standards
Group (TRSG) has introduced one of the
most advanced TSCM deployment
platforms available, offering the essential
elements of scalability, versatility and
mobility.

MMAP is a high-technology, budget
friendly spectrum surveillance platform,
in keeping with the Kestrel[®] brand
philosophy, of bringing powerful resources
to market at a realistic price point.

The Kestrel Mobile Monitoring and Analysis
Platform (MMAP)[™] is custom designed for
dynamic mobile RF Remote Spectrum
Surveillance and Monitoring (RSSM)
assignments.

*The Kestrel TSCM[®] Professional Software is a
Canadian innovation, designed and developed
by the Technical Research and Standards Group
(TRSG) of Professional Development TSCM
Group Inc.*

**"The Kestrel[®] Mobile Monitoring and Analysis
Platform (MMAP)[™] provides Powerful RF Spectrum
Dominance for High Value Targets..."**



Key Features

20160517v1.01

Collection antennas and tactical sensors are not
visible to the casual observer unlike other mobile
platforms that utilize roof top antenna arrays. ✎

The ability to deploy a low profile collection
platform significantly enhances the timely
detection and identification of potentially hostile
signal events. ✎

MMAP is powered by the Kestrel TSCM[®]
Professional Software | Signal Intelligence Support
System (SISS)[™] for operator attended and
unattended collection and analysis of the ambient
RF spectrum environment. ✎

MMAP can be custom configured across multiple
search receivers and analyzers for automated
collection up to 43 GHz, and IFBW configurations of
up to 160 MHz depending on the SDR hardware
deployed. ✎

MMAP includes robust high speed 4G | LTE Mobile
Broadband connectivity, permitting remote
network communication capability. ✎

MMAP can generate real-time dynamic runtime
reports, permits post collection report processing,
and brings seemingly separate data sources into the
analytical spotlight for the technical analyst. ✎

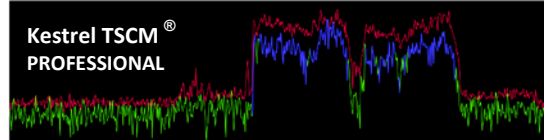
"Innovation is Simply the Beginning..."

Technical operators worldwide are seeing a
significant increase in demand by both private and
public sector organizations for a wide range of new
Technical Surveillance Countermeasures (TSCM)
services, often involving challenging deployment
methodology in response to public safety,
terrorism, espionage, and organized crime. ✎

MMAP provides the means to meet these new
challenges with a deployable mobile solution for
the collection, processing, characterization and
analysis of the ambient RF spectrum
environment. ✎

MMAP is an advanced mobile RF collection and
surveillance platform, optimized for a wide range
of Remote Spectrum Surveillance and Monitoring
(RSSM) roles, where fixed spectrum surveillance
may not be an effective alternative. MMAP is
ideal for large government sites with multiple
structures and a requirement for sustainable
public access. ✎

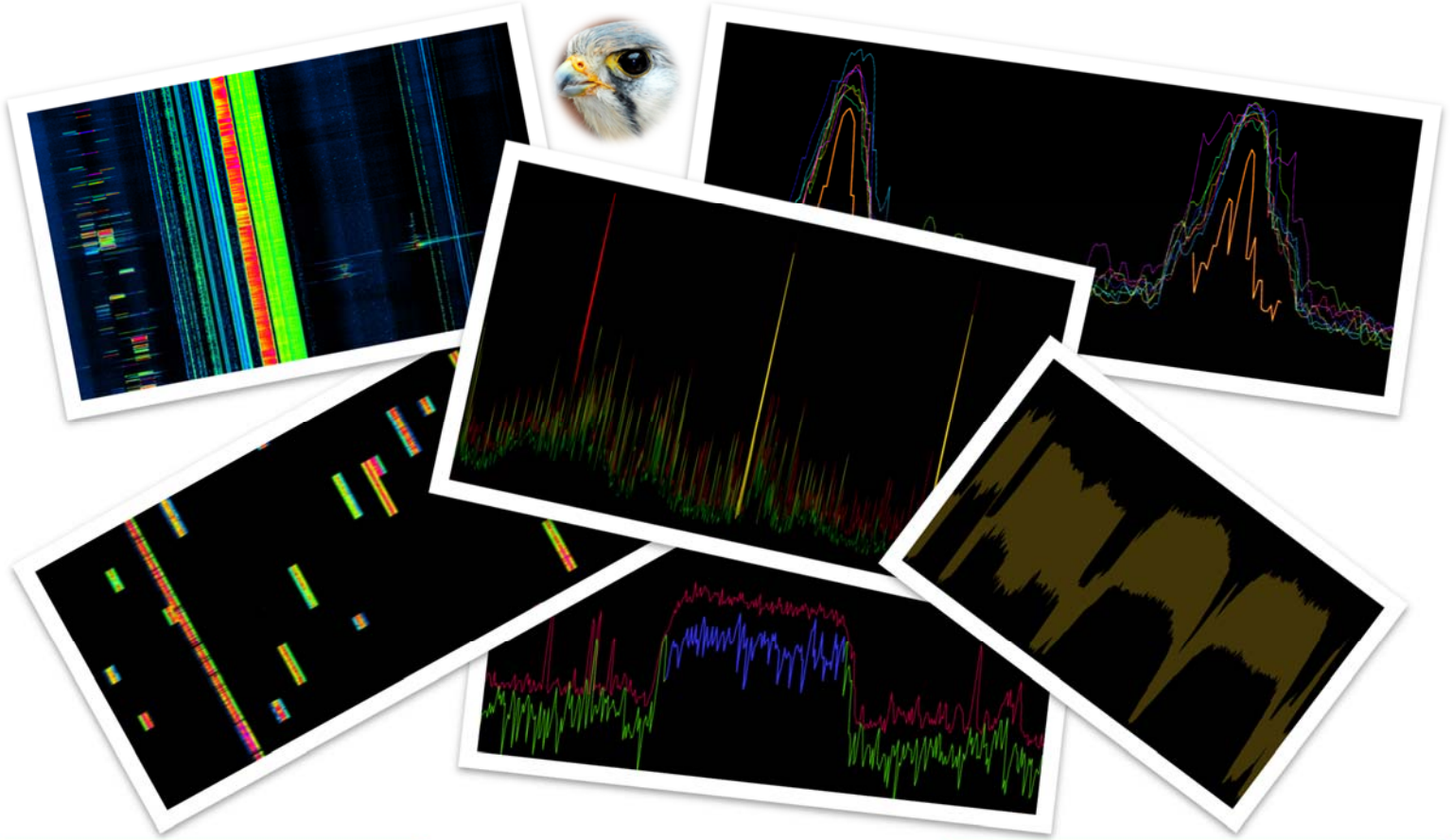
Kestrel TSCM[®]
PROFESSIONAL



Professional Development TSCM Group Inc.

5-4104 Fairview Street, Suite 319 Burlington Ontario Canada L7L 4Y8

Telephone: 647-293-7384 Email: tsb@pdtg.ca Website: www.pdtg.ca



Kestrel TSCM® MMAP
Signal Intelligence Support
System (SISS)™

The Kestrel TSCM® Professional Software, is innovative industry leading Canadian technology that is operator centric and work-flow oriented. Operator training and certification is an essential component of the MMAP package and includes advanced training on the operation of the MMAP vehicle deployment, Kestrel TSCM® Professional Software and Kestrel Central Visualizer (KCV)™. Each vehicle is custom configured with client selected Software Defined Radio (SDR) hardware, supported by the Kestrel TSCM® Professional Software, and includes the appropriate level of operator training on the client selected hardware. ✈

To learn more about our Mobile Monitoring and Analysis Platform (MMAP)™, please contact Paul D Turner, TSS TSI at Professional Development TSCM Group Inc.



Key Features

The ability to deploy and dynamically manage any number of remote mobile and / or fixed collection stations is fully supported, utilizing the Kestrel Central Visualizer (KCV)™ module, providing a powerful and redundant managed Remote Command and Control (RCC) points. ✈

Kestrel Central Visualizer (KCV)™ allows the technical operator to remotely program, control and manage multiple remote MMAP and fixed collection site systems. ✈

The Kestrel TSCM® Automated Export Control (AEC)™ module supports the ability to automate the export of programmable data reference sets, and provides a fail-safe collection environmental reference library of Spectra, RSSI, IQ, Minimum Detection Amplitude (MDA) Automatic Signal Lists, and Dynamic Alert Annunciator (DAA) based Exceedance and Loss alerts. ✈

MMAP is industry disruptive technology, bringing new capability in the face of elevated threat levels worldwide. ✈

MMAP Specifications and Available Options are Subject to Change Without Notice.

"Innovation is Simply the Beginning..."

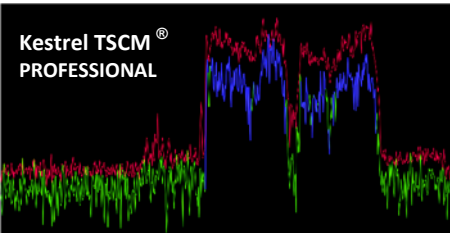
Deployment capability includes Technical Surveillance Countermeasures (TSCM) assignments, Signals Intelligence (SIGINT) applications, Spectrum Management and Regulatory Compliance, Law Enforcement, EOD, Tactical Deployment, and a wide range of technical support for organized VIP Protective Operations. ✈

MMAP is an ideal RF collection and monitoring platform for large outdoor gatherings such as demonstrations, and other large gatherings. ✈



Contact Our Office for Product Information, Technical Specifications, and Sales Information.

Kestrel TSCM®
PROFESSIONAL



Professional Development TSCM Group Inc.

5-4104 Fairview Street, Suite 319 Burlington Ontario Canada L7L 4Y8

Telephone: 647-293-7384 Email: tsb@pdtg.ca Website: www.pdtg.ca