

Kestrel TSCM[®]
Professional Software
Signal Intelligence Support
System (SISS)[™]

The Kestrel TSCM[®] Professional Software, DTAP-GPS Mobile Monitoring and Analysis Platform (MMAP)[™] provides advanced geo-location heat mapping capability.

The complexity of the modern threat environment demands sophisticated collection tools that allow for scalability, versatility and mobility during deployment.

Our Technical Research and Standards Group (TRSG)[™] has introduced one of the most advanced TSCM deployment platforms available, offering the essential elements of scalability, versatility and mobility.

MMAP[™] is a high-technology, budget friendly spectrum surveillance platform, in keeping with the Kestrel[®] brand philosophy, of bringing powerful resources to market at a realistic price point.

The Kestrel Mobile Monitoring and Analysis Platform (MMAP)[™] is custom designed for dynamic mobile RF Remote Spectrum Surveillance and Monitoring (RSSM) assignments.

Signal radio real-time mobile geo-location heat mapping is now a reality for TSCM and SIGINT mission requirements.

The Kestrel TSCM[®] Professional Software is a Canadian innovation, designed and developed by the Technical Research and Standards Group (TRSG) of Professional Development TSCM Group Inc.

"The Kestrel[®] Mobile Monitoring and Analysis Platform (MMAP)[™] provides Powerful RF Spectrum Dominance for High Value Targets..."



Key Features

20200908v1-02

Collection antennas and tactical sensors are not visible to the casual observer unlike other mobile platforms that utilize roof top antenna arrays. ✈

The ability to deploy a low profile collection platform significantly enhances the timely detection and identification of potentially hostile signal events. ✈

MMAP[™] is powered by the Kestrel TSCM[®] Professional Software | Signal Intelligence Support System (SISS)[™] for operator attended and unattended collection and analysis of the ambient RF spectrum environment. ✈

MMAP[™] can be custom configured across multiple search receivers and analyzers for automated collection up to 50 GHz, and IFBW configurations of up to 160 MHz depending on the SDR hardware deployed. ✈

MMAP[™] includes robust high speed 4G | LTE Mobile Broadband connectivity, permitting remote network communication capability. ✈

MMAP[™] can generate real-time dynamic runtime reports, permits post collection report processing, and brings seemingly separate data sources into the analytical spotlight for the technical analyst. ✈

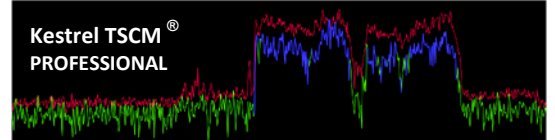
"Innovation is Simply the Beginning..."

Technical operators worldwide are seeing a significant increase in demand by both private and public sector organizations for a wide range of new Technical Surveillance Countermeasures (TSCM) services, often involving challenging deployment methodology in response to public safety, terrorism, espionage, and organized crime. ✈

MMAP[™] provides the means to meet these new challenges with a deployable mobile solution for the collection, processing, characterization and analysis of the ambient RF spectrum environment. ✈

MMAP[™] is an advanced mobile RF collection and surveillance platform, optimized for a wide range of Remote Spectrum Surveillance and Monitoring (RSSM) roles, where fixed spectrum surveillance may not be an effective alternative. MMAP is ideal for large government sites with multiple structures and a requirement for sustainable public access. ✈

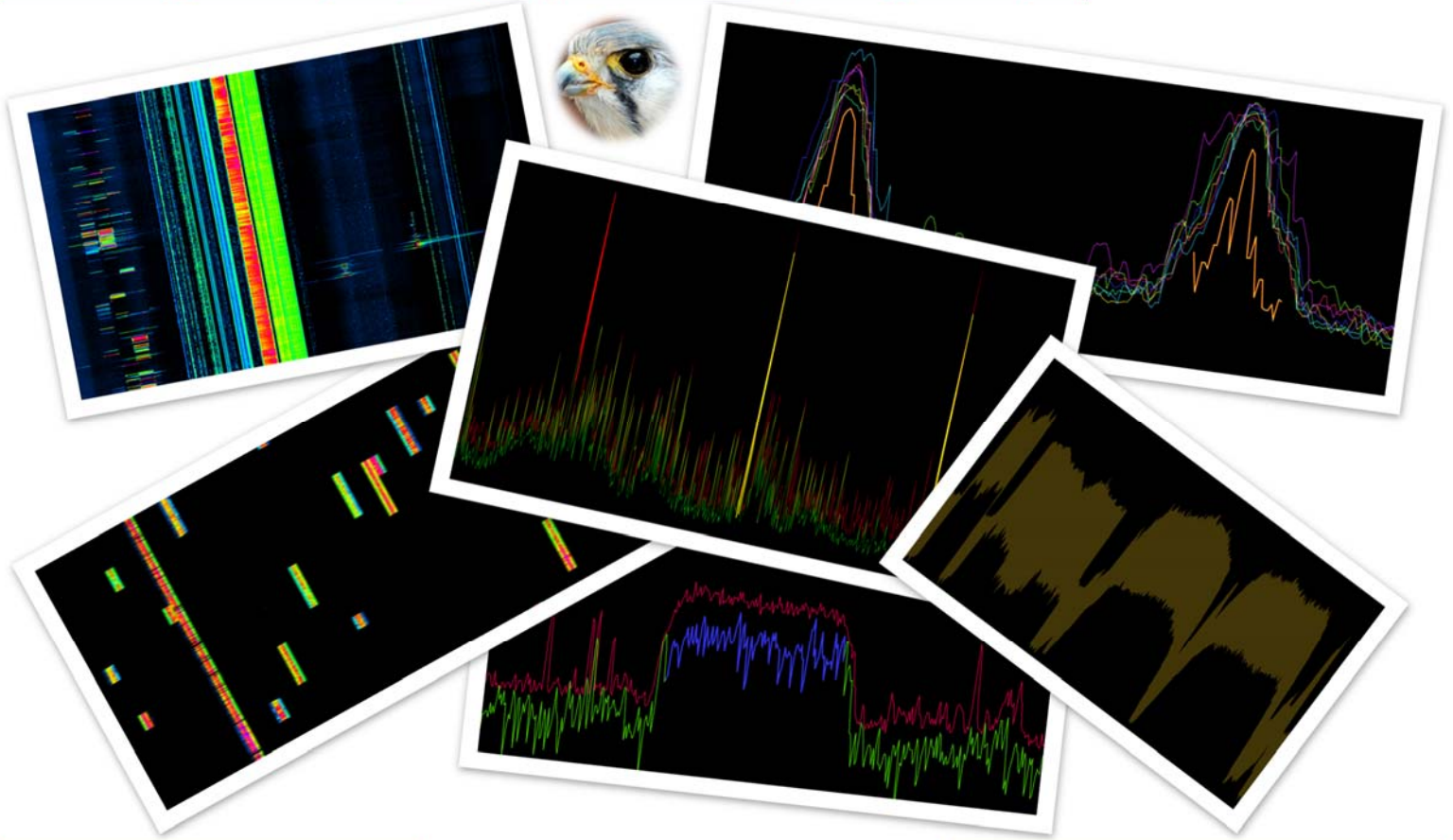
Kestrel TSCM[®]
PROFESSIONAL



Professional Development TSCM Group Inc.

5-4104 Fairview Street, Suite 319 Burlington Ontario Canada L7L 4Y8

Telephone: 647-293-7384 Email: tsb@pdtg.ca Website: www.pdtg.ca



Kestrel TSCM® MMAP **Signal Intelligence Support** **System (SISS)™**

The Kestrel TSCM® Professional Software, is innovative industry leading Canadian technology that is operator centric and work-flow oriented. Operator training and certification is an essential component of the MMAP™ package and includes advanced training on the operation of the MMAP™ vehicle deployment, Kestrel TSCM® Professional Software and Kestrel Central Visualizer (KCV)™. Each vehicle is custom configured with client selected Software Defined Radio (SDR) hardware, supported by the Kestrel TSCM® Professional Software, and includes the appropriate level of operator training on the client selected hardware. ✈

To learn more about our Mobile Monitoring and Analysis Platform (MMAP)™, please contact Paul D Turner, TSS TSI at Professional Development TSCM Group Inc.



Key Features

The ability to deploy and dynamically manage any number of remote mobile and / or fixed collection stations is fully supported, utilizing the Kestrel Central Visualizer (KCV)™ module, providing a powerful and redundant managed Remote Command and Control (RCC) points. ✈

Kestrel Central Visualizer (KCV)™ allows the technical operator to remotely program, control and manage multiple remote MMAP™ and fixed collection site systems. ✈

The Kestrel TSCM® Automated Export Control (AEC)™ module supports the ability to automate the export of programmable data reference sets, and provides a fail-safe collection environmental reference library of Spectra, RSSI, IQ, Minimum Detection Amplitude (MDA) Automatic Signal Lists, and Dynamic Alert Annunciator (DAA)™ based Exceedance and Loss alerts. ✈

MMAP™ is industry disruptive technology, bringing new capability in the face of elevated threat levels worldwide. ✈

MMAP Specifications and Available Options are Subject to Change Without Notice.

"Innovation is Simply the Beginning..."

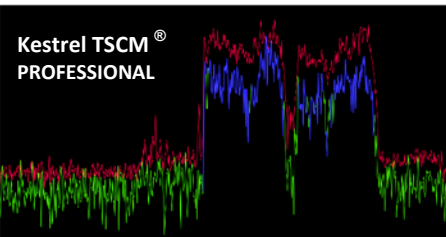
Deployment capability includes Technical Surveillance Countermeasures (TSCM) assignments, Signals Intelligence (SIGINT) applications, Spectrum Management and Regulatory Compliance, Law Enforcement, EOD, Tactical Deployment, and a wide range of technical support for organized VIP Protective Operations. ✈

MMAP™ is an ideal RF collection and monitoring platform for large outdoor gatherings such as demonstrations, and other large gatherings. ✈



Contact Our Office for Product Information, Technical Specifications, and Sales Information.

Kestrel TSCM®
PROFESSIONAL



Professional Development TSCM Group Inc.

5-4104 Fairview Street, Suite 319 Burlington Ontario Canada L7L 4Y8

Telephone: **647-293-7384** Email: tsb@pdtg.ca Website: www.pdtg.ca